



Waterman's
Ideal
Fountain Pen



Ideal



Known the World

Copyright 1925
by
L. E. Waterman Company
New York

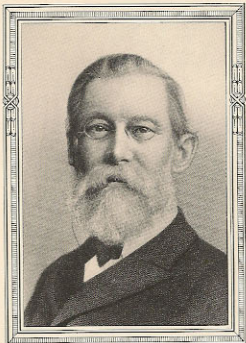
Waterman's Ideal Fountain Pen



W. L. Waterman Company, 191 Broadway
NEW YORK CITY

Newark, 140 Thomas St. ~ Chicago, 129 South State St.
Boston, 40 School St. ~ San Francisco, 17 Stockton St.
Montreal, 179 St. James St. ~ Paris
London, 41 Kingsway, W.C.2.

Waterman's Fountain Pen



L. E. Waterman

Who Founded the Waterman Pen Industry in 1884

BECAUSE Lewis E. Waterman gave to the world an article of universal need, the name Waterman is perhaps better known than any other word that identifies an article of commerce.

In every country on the globe, the word Waterman's is known and used to identify pen preference.

Forty years ago parents began to teach their children what the name Waterman's stood for and today those children, now become parents and grandparents, are passing the message on to their descendants who, in turn, will pass it on to theirs.

Lewis E. Waterman put into the pen he created the essence of enduring excellence, otherwise Waterman's Ideal Fountain Pen could not have come down through the years steadily adding to the popular favor with which it is regarded.

The general acceptance of Waterman's Pen as the greatest writing implement is itself the highest tribute to the man whose name it bears.

This Catalog

THIS CATALOG is issued with a threefold purpose in mind. First, to enable the merchant to easily determine just what styles of pens and pencils, inks and accessories, we are prepared to supply quickly so that he may keep his stock representative and complete. In other words, as a guide to ordering.

Second, as a book of information so that merchants may be thoroughly informed on technical details, a knowledge of which insures larger and more satisfactory sales, and

Third, as a guide book which can be shown to customers who desire models which the retail merchant may not have in stock but which may be selected from the catalog and quickly obtained through any of our service stations.

Because of this triple usefulness, merchants and their clerks will find it of advantage to keep this catalog where it can frequently be reviewed and is accessible.

An Aid to Better Business

EVERY MERCHANT and every clerk who desires to increase his fountain pen sales should carefully read the following pages. Those who do and who adopt the information the pages contain will find it of great assistance in making more sales, each of enduring influence.

There are few articles in common use today where knowledge of the product is as essential as it is in the sale of fountain pens. This is because of the varying character of demand.

Different people have preferences for different styles. One person wants a self-filler; another, the regular type; a third, a safety pen. One will choose a black pen; the second, a mottled, and the third a cardinal. Some want plain pens; others want them mounted with gold or silver.

After the style of holder has been determined, the size of the barrel must be decided upon, which is influenced by the size of the hand or the natural preference for a large or a small holder.

The style and size of pen having been determined, there is point preference to be considered: a fine, a medium or a broad point may best suit the writer; a stiff or a flexible point may be desired.

A fountain pen, unlike many articles purchased, may be used for a long time. It is used daily; it is constantly thought about; it has continuous influence. For this reason the merchant or clerk selling a fountain pen should be insistent that the pen he sells is satisfactory to the customer in every particular.

The pages of this catalog give him the information he needs to enable him to meet every desire that arises and to sell fountain pens to the greatest advantage.

Again we urge you to read this catalog carefully and to become informed upon the many selling advantages its pages offer.

Waterman's Fountain Pen

COMMENTS on the Special Features influencing the sales of Waterman's Ideal Fountain Pens, Pencils, Ink and Accessories that will prove of interest and advantage to you will be found on the following pages.

You are urged to read these pages carefully.

THE SELF-FILLING TYPE.....	page 16
THE POCKET TYPE.....	page 43
THE SAFETY TYPE.....	page 36
THE REGULAR TYPE.....	page 51
PENCILS.....	page 60
WATERMAN'S IDEAL INK.....	page 78
WOMEN'S PENS.....	page 36
THE GIFT PRACTICAL.....	page 77
WATERMAN'S COMBINATION WRITING SETS.....	page 70
SHOW CASES.....	page 82
PEN POINTS.....	page 57
FOR COUNTER AND WINDOW DISPLAY.....	page 68
WHY SELL WATERMAN'S.....	page 12
DRAFTER SERVICE.....	page 89
STORE SYSTEM.....	page 90
ADVERTISING.....	page 92
COMPLETE STOCKS.....	page 91
THE CARE OF A PEN.....	page 93
PENS AS PRIZES.....	page 94

Organization Units



MANY MILLION fountain pens are made and distributed each year by the L. E. Waterman Company. Eighty thousand merchants in all parts of the world assist in the distribution of Waterman's Ideal Fountain Pens, Waterman's Pencils and Waterman's Ink.

More than twenty-five hundred men and women are directly employed in Waterman's factories and service stations.

Three factories are necessary to manufacture Waterman's product: the rubber parts' factory at Seymour, Connecticut; the parent plant at Newark, New Jersey, where Waterman's Pens, Waterman's Pencils and Waterman's Ink are manufactured, and a large factory at St. Lambert, Quebec, Canada.

Six Waterman's service stations located so that they can best serve merchants in different localities. The "Pen Corners" in New York, Boston and London, and the service stations in Chicago, San Francisco and Montreal, each serves merchants in its respective territory.

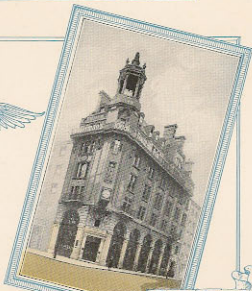
The factories and service stations are illustrated on the following pages.

It is always an inspiration to know that a vast organization is back of the product sold. An examination of the illustrations of the various Waterman units will furnish that inspiration.

Waterman's *Ideal* Fountain Pen



The Pen Corner
New York

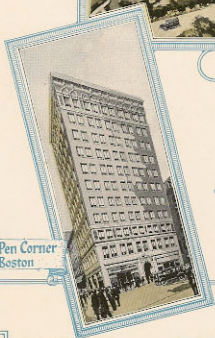


The Pen Corner
London



Waterman
Factory
Newark
N. J.

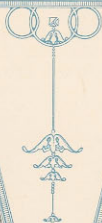
Newark
N. J.



The Pen Corner
Boston



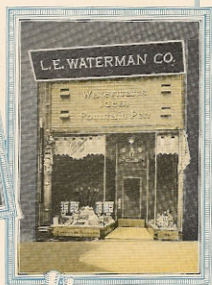
Waterman Building
Chicago



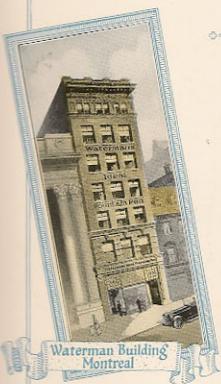
Waterman's Ideal Fountain Pen



Rubber Factory, Seymour, Conn.



San Francisco Store



Waterman Building
Montreal



Canadian Factory, St. Lambert, Quebec

1884



1925

Waterman's Fountain Pen



AT EVERY NATIONAL EXHIBIT at which Waterman's Pens have been shown, a medal for superiority of product has been awarded.



Waterman's Fountain Pen



ON these two pages are illustrated a number of the medals awarded to the L. E. Waterman Company.

Why Sell Waterman's



BECAUSE Waterman's are the best pens the merchants can sell and because they are the best pens that writers can buy.

Here Are Fifteen Specific Reasons Why Waterman's Are the Best Pens to Sell:

Because for more than forty years they have held a preeminent place in public favor.

Because for more than forty years they have been consistently advertised to both young and old.

Because of this the words "Waterman's" and "fountain pens" have become synonymous.

Because for over forty years the prices of Waterman's have not changed. The consumer has always been able to secure a duplicate at the same price he paid for his original purchase.

Because every Waterman's is guaranteed perfect when sold and perfect in use. This obviates the dissatisfaction that results from the sale of inferior pens.

Because Waterman's may be offered in a variety of styles and sizes so that any fancy for size or style may be perfectly satisfied.

Because Waterman's maintain a series of service stations ready to cooperate with the merchant; to sell for his account such styles as are wanted but because of more limited stocks he is unable to supply.

Because at these service stations complete stocks are constantly carried, the merchant is assured of quick delivery of needed styles from a convenient supply.

Because of the complete system of cooperation Waterman's have developed both in selling and in advertising.

Because of the effective window displays Waterman's supply to merchants who will accept suggestions, at no cost to the merchant.

Because of the assistance that is given in perfecting these displays.

Because of the cooperative advertising Waterman's furnish, without cost, in the form of posters, booklets, folders, car cards, window cards, store signs, etc.

Waterman's Fountain Pen

Because of the painstaking effort of Waterman's to bring to merchants and salesmen the most effective methods of selling fountain pens.

Because Waterman's have designed and are prepared to supply the most appropriate styles of show cases and display trays.

Because Waterman's terms are fair and inflexible the merchant always knows exactly where he stands and is never subjected to unfair competition.

In brief, because Waterman's offer not only the best and most popular pen but in connection with it every feature of cooperative effort that is known.

Why the Public Buy Waterman's

Because through a period of more than forty years Waterman's has been recognized by father and son, mother and daughter, as the "pen of preeminence."

Because no Waterman's Pen has ever been sold that was not backed by a guarantee of service and perfection.

Because the price of Waterman's Pen has always been fair and the buyer has never been overcharged.

Because the buyer has always been able to get a size and a pen point perfectly adapted to the size of hand and style of writing.

Because there has been a maintenance of styles and sizes and duplicates of original purchases could always be easily obtained.

Because Waterman's advertising has always adhered strictly to the truth and the buyer could rely on every promise being fulfilled.

Because Waterman's dealers have recognized the wisdom of making repairs without quibble or question and have made repairs at very nominal cost.

Because of the low cost of Waterman's Pens and their preeminent reliability.

Because of the facility with which a pen not satisfactory in every detail can be exchanged immediately for a pen that is.

These are the influencing features in the popularity of Waterman's Ideal Fountain Pens which through the cooperation of the most reliable merchants Waterman's have been able to maintain.

These are some of the reasons why Waterman's business is the largest and most successful in the fountain pen field and which being continued will always make Waterman's the best pen to buy and the easiest and most satisfactory pen to sell.

Waterman's Fountain Pen

Key to Standard Numbering System

THE following table will fully explain the system which is used in the numbering of all Waterman's Ideal Fountain Pens. We believe that this table, with the accompanying explanation of the meaning of each figure in every number, will greatly facilitate the re-ordering, checking and billing of all fountain pens of our make.

SIZE OF GOLD PEN is indicated by number in unit column, i. e., 2-4-5-6-8-10

TYPE OF HOLDER is indicated by number in tens column, i. e., 0-1-2-4-5-7.

MOUNTINGS are indicated by figures in hundreds and thousands columns, i. e., 2-3-4-5-6-7-8-9.

Factor:

Regular Type (Straight Cap).....	= 0 in tens column
Regular Type (Cone Cap).....	= 1 in tens column
Regular Type (Taper Cap).....	= 2 in tens column
Safety Type.....	= 4 in tens column
Self-Filling Type.....	= 5 in tens column
Pocket Type.....	= 7 in tens column

Factor:

Sterling Silver Barrel covered.....	= 2 in hundreds column
14 Kt. Solid Gold Barrel covered.....	= 3 in hundreds column
Sterling Silver Barrel and Cap covered.....	= 4 in hundreds column
14 Kt. Solid Gold Barrel and Cap covered.....	= 5 in hundreds column
Two 14 Kt. Solid Gold Bands on Barrel.....	= 6 in hundreds column
One 14 Kt. Solid Gold Middle Band on Barrel.....	= 7 in hundreds column
One 14 Kt. Solid Gold Band on Cap.....	= 8 in hundreds column
14 Kt. Solid Gold Band Top of Cap.....	= 9 in hundreds column
One 14 Kt. Solid Gold Band at Lip of Cap.....	= 1 in thousands column
Two 14 Kt. Solid Gold Bands on Pen, one at upper end of Cap, the other at end of Holder.....	= 2 in thousands column

Gold filled mounting indicated by prefix 0. Slender holder is indicated by suffix 5. Short (V) length indicated by suffix V. Ring on end of Cap indicated by suffix w. For example: 01852V; V w. = world indicates slender, short (V) length, Self-Filling, with narrow gold filled band on lip of cap with gold filled ring and with gold pen size 2, i. e.

Prefix

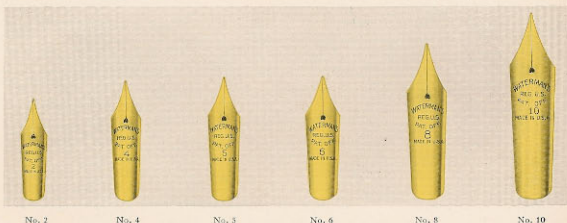
Thousands Column.....	0—Gold Filled
Hundreds Column.....	1—One Narrow Lip Band
Tens Column.....	4—Gold Band on Cap
	5—Self-Filling Type

Unit Column:..... 2—Gold Pen size No. 2
 Suffix..... 5—Slender
 Suffix..... V—Short (V) length
 Suffix..... w. 2—With ring

Mountings are Sterling Silver, Gold Filled 18 Kt.—1/10 gold and Solid Gold 14 Kt. Mounting extending over the closed end of the barrel indicated by the suffix E.C.

This KEY TABLE is made by using No. 2 in the unit column in all instances, i. e., fitted with No. 2 size gold pens—see below.

Types of Holders	Full Length	Short (V) Length	Slender Size	Two Gold Bands on Barrel	Gold Filled Middle Band on Barrel	Gold Filled Band on Cap	Gold Filled Top of Cap	Sterling Silver Barrel and Cap covered	Gold Filled Barrel covered	Gold Filled Cap covered	14 Kt. Solid Gold Barrel covered	14 Kt. Solid Gold Barrel and Cap covered	Narrow Gold Band on Lip of Cap	Narrow Gold Filled Band at end of Lip of Cap	and at end of holder
Regular Type (Straight Cap).....	02	0602	402
Regular Type (Cone Cap).....	12	1254	0412	0412	412	0312	0512	312
Regular Type (Taper Cap).....	22	0622	0722	422	0322	0522	322
Safety Type.....	42	425V	4255	0642	0742	0942V	442	0542
Self-Filling Type.....	52	52V	5255	0652	0752	0852V	0952V	452	0352	0552	352
Pocket Type.....	72	72V	7255	0672	0772	0872V	0972V	472	0372	0572	372



In the above table all types of holders in which Waterman's Ideal Fountain Pens are made are shown in the left column while the various styles in which each holder is made are shown across the top of the table.

The finish of the holder or the design of the mounting, however, is always indicated by the addition of a descriptive word after the number, for instance:

"Plain" or "Classical" "Cardinal" or "Matched" on the unmounted pens. "Plain" or "Sheraton" on gold hinged pens. "Gothic" or "Figure" etc., on gold or silver mounted pens.

Size of Gold Pens is indicated by the figure in the unit column of all numbers, i. e., Safety pen, plain, fitted with No. 2 gold pen is No. 49.

Above illustrations are full size. For comparative sizes of Gold Pens see page 59.

Waterman's Fountain Pen

Manufacturing



TH**ERE** are certain details of manufacture with which every merchant and salesman should be familiar.

He should know about the material that is used in a product and something of the skill that is exercised in manufacture.

Only selected rubber of the highest grade is used in the manufacture of Waterman's Ideal Fountain Pens.

Only fourteen-carat gold is used for pen points—only fourteen-carat gold is suitable for perfect pen points. All gold is procured direct from the United States Government so that its fineness may be guaranteed, and is made into pen points in our own factories.

Every pen point, regardless of the price at which a pen is sold, is tipped with iridium, the hardest metal known. Only the finest quality of iridium is used in Waterman's Ideal Fountain Pens.

This rubber, gold and iridium are fashioned into parts in our own factories by skilled workmen who have been with us for years, and assembled and finished in our own factories.

More than two hundred separate and distinct operations are necessary to make a perfect pen. Each and all of these operations are performed in our own factories by skilled employees, many of them having worked with the Waterman organization for more than twenty-five years.

Although every detail of a Waterman's Pen is of great importance, there are two patented features that mark Waterman's Ideal Fountain Pen as different and superior.

THE SPOON-FEED which is responsible for perfect writing accomplishment, and the CLIP-CAP which insures against pen-loss and accident.

These two features can be had only in Waterman's Pens.

THE SPOON-FEED, which fits under the pen point, controls the flow of ink. Made of the finest Para rubber with channels and reservoirs scientifically designed and constructed, it acts as a governor which automatically regulates the passage of the ink, causing a steady flow whether the ink is warm or cold and whether the reservoir is full or only partly full of ink.

THE SPOON-FEED makes Waterman's the perfect writing instrument it is. Without the SPOON-FEED it would be more like other fountain pens.

THE CLIP-CAP is distinctive because of the way it is attached to the cap and because of the ball end. It is made of highly-tempered metal that will give without bending and is attached to the cap with double rivets which hold it firmly in place indefinitely.

The ball end slips over the cloth of the pocket without injuring the material of the waistcoat; this is a marked advantage. The CLIP-CAP not only holds the pen securely in the pocket but prevents its rolling from desk or table.

When selling a Waterman's Ideal Fountain Pen, you can do so with a feeling of confidence that every part is made of the finest selected material by the most skillful workmen it has been possible to develop.

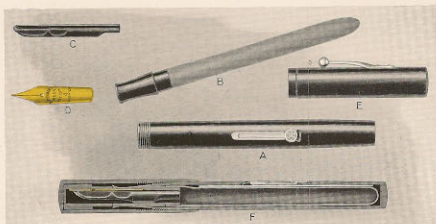
The Self-Filling Type

THE Waterman's Self-filling Type is today by far the most universally used fountain pen.

The ease with which it may be filled is the strong appealing feature.

The operations of the Self-filling Type should be clearly understood. Just as a clear mental picture of the gear shifts in an automobile assists the chauffeur in shifting gears, a clear vision of what happens when a Self-filling fountain pen is filled helps the person who fills the pen.

The accompanying illustration shows the six major parts which make up the Self-filling Type.



A—Barrel. B—Point Section (with Ink Tube attached). C—Spoon Feed.
D—Gold Pen. E—Cap with clip attached. F—Sectional View.

Part B shows the point section to which is cemented a flexible rubber reservoir which holds the ink supply.

This flexible reservoir when introduced into the barrel A rests against the filling device which is made part of the barrel.

When the lever, which you will notice on the barrel, is raised the air which the reservoir contains is immediately exhausted. When the lever is reset the rubber ink tube expands, drawing ink into the tube.

The process is very simple but very effective.

To fill the Self-filling Type all that is necessary is to pull out the lever, completely immerse the point section in a bottle of Waterman's Ink, replace the lever and after two seconds remove the pen and it is filled.

After filling, the pen and point section should be carefully dried.

The Self-filling Type is made with and without pocket clip because it is used for all purposes. It is made in all sizes and styles as shown in this Catalog and in black, mottled and cardinal, plain and ornamented, also with ring on the short lengths especially for women's use.

Waterman's Fountain Pen

SELF-FILLING TYPE

COMPARATIVE SIZES

Illustrations Are Actual Size



Chased
with Clip
No. 52 1/5
\$2.75



Chased
with Clip
No. 52
\$3.75



Plain
with Clip
No. 52
\$3.75



Chased
with Clip
No. 54
\$4.25



Chased
with Clip
No. 55
\$5.25



Chased
with Clip
No. 56
\$6.25



Chased
with Clip
No. 58
\$8.25

Any of the above pens may be had with either chased or plain holders, fitted with points as illustrated on page 59

Waterman's Fountain Pen

SELF-FILLING TYPE

COMPARATIVE SIZES

Illustrations Are Actual Size



Cardinal
with Gold Filled
Lever, Clip and Nar-
row Band at Lip of
Cap.
No. 01852 1/2 . . . \$4.00

Cardinal
with Gold Filled
Lever, Clip and Nar-
row Band at Lip of
Cap.
No. 01852 . . . \$4.00

Cardinal
with Gold Filled
Lever, Clip and Nar-
row Band at Lip of
Cap.
No. 01854 . . . \$5.50

Cardinal
with Gold Filled
Lever, Clip and Nar-
row Band at Lip of
Cap.
No. 01855 . . . \$6.50

Cardinal
with Gold Filled
Lever, Clip and Nar-
row Band at Lip of
Cap.
No. 01856 . . . \$7.50

Cardinal
with Gold Filled
Lever, Clip and Nar-
row Band at Lip of
Cap.
No. 01858 . . . \$9.50

Any of the above pens may be had fitted with points as illustrated on page 59

Waterman's Fountain Pen

SELF-FILLING TYPE

COMPARATIVE SIZES

Illustrations Are Actual Size



Mottled with Gold Filled Lever, Clip and Narrow Band at Lip of Cap.
No. 01852½ . . . \$4.00

Mottled with Gold Filled Lever, Clip and Narrow Band at Lip of Cap.
No. 01853 . . . \$4.00

Mottled with Gold Filled Lever, Clip and Narrow Band at Lip of Cap.
No. 01854 . . . \$5.50

Mottled with Gold Filled Lever, Clip and Narrow Band at Lip of Cap.
No. 01855 . . . \$6.50

Mottled with Gold Filled Lever, Clip and Narrow Band at Lip of Cap.
No. 01856 . . . \$7.50

Mottled with Gold Filled Lever, Clip and Narrow Band at Lip of Cap.
No. 01858 . . . \$9.50

Any of the above pens may be had fitted with points as illustrated on page 59

Waterman's Ideal Fountain Pen

SELF-FILLING TYPE

COMPARATIVE SIZES

Illustrations Are Actual Size



Plain Filled
Lever, Clip and Nar-
row Band at Lip of
Cap. No. 0185255 . . . \$4.00

Plain Filled
Lever, Clip and Nar-
row Band at Lip of
Cap. No. 01882 . . . \$4.00

Plain Filled
Lever, Clip and Nar-
row Band at Lip of
Cap. No. 01884 . . . \$5.50

Plain Filled
Lever, Clip and Nar-
row Band at Lip of
Cap. No. 01885 . . . \$6.50

Plain Filled
Lever, Clip and Nar-
row Band at Lip of
Cap. No. 01886 . . . \$7.50

Plain Filled
Lever, Clip and Nar-
row Band at Lip of
Cap. No. 01888 . . . \$9.50

Any of the above pens may be had fitted
with points as illustrated on page 59

14 Kt. Solid Green
Gold Lever, Clip and
Band. No. 1854 . . . \$10.00

Waterman's **Idea Fountain Pen**

SELF-FILLING TYPE

GOLD BANDED AND GOLD MOUNTED

Illustrations Are
Actual Size



Gold Filled
Sheraton or Plain
Band with Gold
Filled Clip
No. 0657... \$4.50
No. 0657... 4.50
No. 0654... 6.00
No. 0655... 7.00
No. 0656... 8.00

Gold Filled
Plain or Sheraton Middle
Band with Gold Filled Clip
No. 0752... \$4.50 0756... \$7.00
0752... 4.50 0756... 8.00
0754... 6.00 0758... 10.00
*14 Kt. Solid Gold Plain
Middle Band with 14 Kt.
Solid Gold Clip
No. 7525... \$11.00 755... \$16.00
752... 12.00 756... 17.00
754... 14.00

Gold Filled
Plain Mounting on
Barrel and Gold Filled
Clip
No. 035236... \$6.00
No. 0352... 6.00
No. 0354... 8.00

*Hand Engraved Vine design on Band and Clip \$2.00 additional each size.

Plain
With Gold Filled Lev-
er, Clip and Narrow
Band at each end of
Holder
No. 03852... \$5.00

No. 02855
(Closed)

Plain
With Gold Filled Lev-
er, Clip and Narrow
Band at each end of
Holder
No. 02855... \$7.00

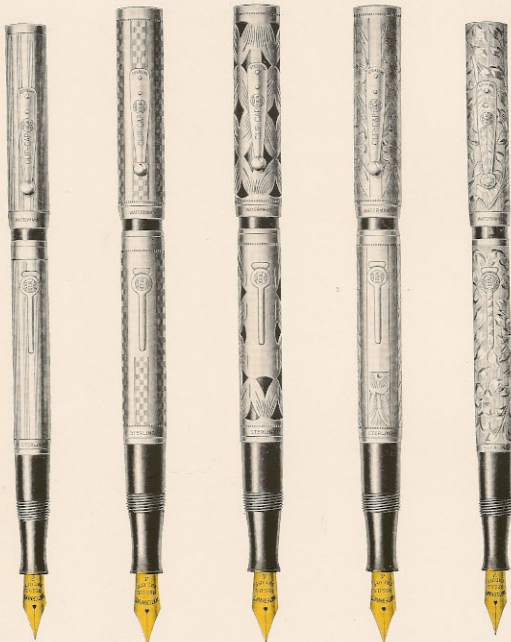
Any of the above pens may be had fitted with points as
illustrated on page 59

Waterman's Fountain Pen

SELF-FILLING TYPE

STERLING SILVER MOUNTED

Illustrations Are Actual Size



Sheraton
Sterling Silver with
Sterling Silver Clip
No. 452½.....\$6.50
No. 452.....6.50
No. 454.....8.20

Gothic
Sterling Silver with
Sterling Silver Clip
No. 457½.....\$5.50
No. 452.....5.50
No. 454.....7.50
No. 455.....9.00
No. 456.....10.00

Filizee
Sterling Silver with
Sterling Silver Clip
No. 457½.....\$5.50
No. 452.....5.50
No. 454.....7.50
No. 455.....9.00
No. 456.....10.00
No. 458.....13.00

Pansy Pansy
Sterling Silver with
Sterling Silver Clip
No. 457½.....\$6.50
No. 457.....6.50
No. 454.....8.30

Hand Engraved Vise
Sterling Silver with
Hand Engraved Ster-
ling Silver Clip
No. 457½.....\$10.00
No. 452.....10.00
No. 454.....13.00

Any of the above pens may be had fitted with points as illustrated on page 59

Waterman's Ideal Fountain Pen

SELF-FILLING TYPE

Illustrations Are Actual Size

GOLD MOUNTED



Plain
Gold Filled with Gold
Filled Clip
No. 0552 $\frac{1}{2}$ \$9.50
No. 0552..... 9.50
No. 0554..... 11.00
No. 0555..... 13.50
No. 0556..... 16.00
14 Kt. Solid Gold with
14 Kt. Solid Gold Clip
No. 552 $\frac{1}{2}$ \$29.00
No. 554..... 39.00

Filigree
Gold Filled with Gold
Filled Clip
No. 0582 $\frac{1}{2}$ \$11.00
No. 0582..... 11.00
No. 0554..... 13.50
No. 0555..... 16.00
No. 0556..... 19.00
No. 0558..... 22.00
14 Kt. Solid Gold with
14 Kt. Solid Gold Clip
No. 552 $\frac{1}{2}$ \$27.00
No. 554..... 37.00

Pansy Panel
Gold Filled with Gold
Filled Clip
No. 0582 $\frac{1}{2}$ \$11.00
No. 0552..... 11.00
No. 0554..... 13.50

Sheraton
Gold Filled with Gold
Filled Clip
No. 0552 $\frac{1}{2}$ \$11.00
No. 0552..... 11.00
No. 0554..... 13.50
14 Kt. Solid Gold with
14 Kt. Solid Gold Clip
No. 554..... \$42.00

Gothic
Gold Filled with Gold
Filled Clip
No. 0552 $\frac{1}{2}$ \$11.00
No. 0552..... 11.00
No. 0554..... 13.50
No. 0555..... 16.00
No. 0556..... 19.00

Above 14 Kt. Solid Gold pens and No. 0552 $\frac{1}{2}$ Plain and Gothic Gold Filled are made in yellow and green gold

Any of the above pens may be had fitted with points as illustrated on page 59

Waterman's Fountain Pen

SELF-FILLING TYPE

STERLING SILVER MOUNTED

Illustrations Are Actual Size



Plain, F. C.
Sterling Silver with
Sterling Silver Clip
No. 452 3/4 . . . \$7.50



Filigree, F. C.
Sterling Silver with
Sterling Silver Clip
No. 452 3/4 . . . \$8.50



Gothic, F. C.
Sterling Silver with
Sterling Silver Clip
No. 452 3/4 . . . \$8.50



Sheraton, E. C.
Sterling Silver with
Sterling Silver Clip
No. 452 3/4 . . . \$8.50



Pansy Panel, E. C.
Sterling Silver with
Sterling Silver Clip
No. 452 3/4 . . . \$8.50



Hand Engraved
Vase, F. C.
Sterling Silver with
Hand Engraved
Sterling Silver Clip
No. 452 3/4 . . . \$10.00

Any of the above pens may be had fitted with points as illustrated on page 59

Waterman's Fountain Pen

SELF-FILLING TYPE

GOLD MOUNTED

Illustrations Are Actual Size



Plain, E. C.
Gold Filled with Gold
Filled Clip
No. 0552 $\frac{1}{2}$\$10.00

Filigree, E. C.
Gold Filled with Gold
Filled Clip
No. 0552 $\frac{1}{2}$\$11.00

Gothic, E. C.
Gold Filled (closed) with
Gold Filled Clip
No. 0552 $\frac{1}{2}$\$11.00

Sheraton, E. C.
Gold Filled with Gold
Filled Clip
No. 0552 $\frac{1}{2}$\$11.00

Pansy Pearl, E. C.
Gold Filled with Gold
Filled Clip
No. 0552 $\frac{1}{2}$\$11.00

No. 0552 $\frac{1}{2}$ Plain, E. C. and Gothic, E. C. are made in yellow and green gold
Any of the above pens may be had fitted with points as illustrated on page 59

Waterman's Fountain Pen

SELF-FILLING TYPE

GOLD MOUNTED

Illustrations Are Actual Size



Plain, E. C.,
14 Kt. Solid Gold
with 14 Kt. Solid
Gold Clip
No. 552½ . . \$37.00

Filigree, E. C.,
14 Kt. Solid Gold
with 14 Kt. Solid
Gold Clip
No. 552½ . . \$37.00

Gothic, E. C.,
14 Kt. Solid Gold
with 14 Kt. Solid
Gold Clip
No. 552½ . . \$42.00

Panzer, E. C.,
14 Kt. Solid Gold
with 14 Kt. Solid
Gold Engraved Clip
No. 552½ . . \$45.50

Sheraton, E. C.,
14 Kt. Solid Gold
with 14 Kt. Solid
Gold Clip
No. 552½ . . \$42.00

Hand Engraved
Vine, E. C.,
14 Kt. Solid Gold
with 14 Kt. Solid
Gold Hand En-
graved Clip
No. 552½ . . \$47.50

Above pens are made in yellow and green gold

Any of the above pens may be had fitted with points as illustrated on page 59

Waterman's Fountain Pen

SELF-FILLING TYPE

Illustrations Are Actual Size

GOLD MOUNTED



Plain, E. C.
14 Kt. Solid Gold
with 14 Kt. Solid
Gold Clip
No. 534 \$47.00

Pillars, E. C.
14 Kt. Solid Gold
with 14 Kt. Solid
Gold Clip
No. 554 \$47.00

Gothic, E. C.
14 Kt. Solid Gold
with 14 Kt. Solid
Gold Clip
No. 534 \$52.00

Sheraton, E. C.
14 Kt. Solid Gold
with 14 Kt. Solid
Gold Clip
No. 554 \$52.00

Hand Engraved Vine,
E. C.
14 Kt. Solid Gold with
14 Kt. Solid Gold
Hand Engraved Clip
No. 554 \$57.50

Pansy Panel, E. C.
14 Kt. Solid Gold
with 14 Kt. Solid
Gold Engraved Clip
No. 554 \$52.50

Above pens are made in yellow and green gold

Any of the above pens may be had fitted with points as illustrated on page 59

Waterman's Fountain Pen

SPECIAL MOUNTINGS

Illustrations Are
Actual Size



Self-Filling
No. 534 Diamond Set
14 Kt. Solid Green Gold
with 14 Kt. Solid Gold
Clip.....\$130.00



Self-Filling
No. 534 Plain 14 Kt.
Solid Green Gold with
14 Kt. Solid Gold Dia-
mond Clip.....\$62.00



Safety
No. 542 1/2 V. Hand En-
graved Vine Full Cov-
ered 14 Kt. Solid Green
Gold with Telescope
Cap and Ring. \$33.00



Self-Filling
No. 554 Hand En-
graved Vine 14 Kt.
Solid Green Gold with
14 Kt. Solid Gold Hand
Engraved Diamond
Clip.....\$70.00
Without Diamond
No. 552 1/2.....\$37.50
No. 554.....47.50



Self-Filling
No. 534 Gold Special 14
Kt. Solid Green Gold
with 14 Kt. Solid Gold
Clip.....\$100.00

Above pens are also made in yellow gold

A handsomely mounted Waterman's Ideal Fountain Pen, in a design distinctive and appropriate, makes a perfect gift, trophy, or souvenir. We are prepared to furnish special mountings for any purpose or occasion, and upon request will submit suggestions and prices.

Any of the above pens may be had fitted with points as illustrated on page 59

Waterman's Ideal Fountain Pen

SELF-FILLING TYPE

SHORT [V] LENGTH

COMPARATIVE SIZES

Illustrations Are Actual Size



Chased
with Nickel Ring
No. 52V, w.r. . . . \$2.75



Chased
with Nickel Ring
No. 54V, w.r. . . . \$7.75
No. 54V, w.r. . . . 4.25
No. 55V, w.r. . . . 5.25
No. 56V, w.r. . . . 6.25



Chased
with Clip
No. 53V, \$2.75



Chased
with Clip
No. 52V, \$7.75



Chased
with Clip
No. 55V, \$5.25

Any of the above pens may be had with either chased or plain holders, fitted with points as illustrated on page 59

Waterman's Fountain Pen

SELF-FILLING TYPE

SHORT [V] LENGTH

COMPARATIVE SIZES

Illustrations Are Actual Size



Cardinal
or Mottled
with
Gold Filled
Lever, Ring and
Narrow Band at
Lip of Cap
No. 01852 1/2 V. w.r.
\$3.50



Cardinal
or Mottled
with
Gold Filled
Lever, Ring and
Narrow Band at
Lip of Cap
No. 01853 V. w.r.
\$3.50



Cardinal
or Mottled
with
Gold Filled
Lever, Ring and
Narrow Band at
Lip of Cap
No. 01854 V. w.r.
\$5.00



Cardinal
or Mottled
with
Gold Filled
Lever, Ring and
Narrow Band at
Lip of Cap
No. 01855 V. w.r.
\$5.00



Cardinal
or Mottled
with
Gold Filled
Lever, Ring and
Narrow Band at
Lip of Cap
No. 01856 V. w.r.
\$7.00

Any of the above pens may be had fitted with points as illustrated on page 59

Waterman's Fountain Pen

SELF-FILLING TYPE

SHORT [V] LENGTH

GOLD BAND MOUNTED

Illustrations Are Actual Size



Chased
with Gold Filled Lever
and Ring
No. 53 $\frac{1}{2}$ V.w.r. \$3.00
No. 53V.w.r. 3.00
No. 54V.w.r. 4.50
No. 55V.w.r. 5.50
No. 30V.w.r. 6.50

14 Kt. Solid Gold
Lever and Ring
No. 53 $\frac{1}{2}$ V.w.r. \$5.50



Plain
Gold Filled Lever, Ring
and Narrow Band at
Lip of Cap
No. 0185 $\frac{1}{2}$ V.w.r. \$3.50



Plain
Gold Filled Lever, Ring
and Narrow Band at
Lip of Cap
No. 0185 $\frac{1}{2}$ V.w.r. \$3.50
No. 01854V.w.r. 5.00



Gold Filled
Plain or Sheraton Band
on Cap with Gold Filled
Ring
No. 0852 $\frac{1}{2}$ V.w.r. \$3.75
No. 085V.w.r. 3.75
No. 0854V.w.r. 5.25

14 Kt. Solid Gold
Plain Band and Ring
No. 852 $\frac{1}{2}$ V.w.r. \$10.00
Hand Engraved Vine
Band and Ring
No. 852 $\frac{1}{2}$ V.w.r. \$11.50



Gold Filled
Plain Band at Top of
Cap with Gold Filled
Ring
No. 0952 $\frac{1}{2}$ V.w.r. \$4.00

14 Kt. Solid Gold
Band and Ring
No. 952 $\frac{1}{2}$ V.w.r. \$12.00

Any of the above pens may be had fitted with points as illustrated on page 59

Waterman's *Ideal* Fountain Pen

SELF-FILLING TYPE

SHORT [V] LENGTH

STERLING SILVER MOUNTED

Illustrations Are Actual Size



Figures, E. C.
Sterling Silver No.
452½V. with Ring
\$6.00



Plain, E. C.
Sterling Silver No.
452½V. with Ring
\$6.00
No. 452½V. with
Telescope Cap and
Ring.....\$8.00



Figures, E. C.
Sterling Silver
No. 457½V. w. c.
(Cloned)



Panay Panel, E. C.
Sterling Silver No.
452½V. with Ring
\$7.00
No. 452½V. with
Telescope Cap and
Ring.....\$9.00



Barleycorn, E. C.
Sterling Silver No.
452½V. with Ring
\$7.00
No. 452½V. with
Telescope Cap and
Ring.....\$9.00
14 Kt. Solid Gold
No. 552½V. with
Ring.....\$35.00
No. 552½V. with
Telescope Cap and
Ring.....\$43.00

Above 14 Kt. Solid Gold pens are made in yellow and green gold
Any of the above pens may be had fitted with points as illustrated on page 59

Waterman's *Ideal* Fountain Pen

SELF-FILLING TYPE

SHORT | V | LENGTH

STERLING SILVER MOUNTED

Illustrations Are Actual Size



Hand Engraved Vine,
E. C.
Sterling Silver
No. 452 $\frac{1}{2}$ V. with Ring
\$7.50
No. 452 $\frac{1}{2}$ V. with Tele-
scope Cap and Ring
\$9.00

14 Kt. Solid Gold
No. 552 $\frac{1}{2}$ V. with Ring
\$35.00
No. 552 $\frac{1}{2}$ V. with Tele-
scope Cap and Ring
\$45.00



Gothic, E. C.
Sterling Silver
No. 452 $\frac{1}{2}$ V. w. r.
(Closed)



Sheraton, E. C.
Sterling Silver
No. 452 $\frac{1}{2}$ V. with Ring
\$7.00
No. 452 $\frac{1}{2}$ V. with Tele-
scope Cap and Ring
\$9.00



Scroll, E. C.
Sterling Silver (Closed)
No. 452 $\frac{1}{2}$ V. with Ring
\$7.00
No. 452 $\frac{1}{2}$ V. with Tele-
scope Cap and Ring
\$9.00



Gothic, E. C.
Sterling Silver
No. 452 $\frac{1}{2}$ V. with Ring
\$7.00
No. 452 $\frac{1}{2}$ V. with Tele-
scope Cap and Ring
\$9.00

Above 14 Kt. Solid Gold pens are made in yellow and green gold

Any of the above pens may be had fitted with points as illustrated on page 59

Waterman's Fountain Pen

SELF-FILLING TYPE

SHORT $\left[\frac{1}{2} \right]$ LENGTH

GOLD MOUNTED

Illustrations Are Actual Size



Filigree, E. C.
Gold Filled
No. 052 $\frac{1}{2}$ V. with
Ring.....\$10.00

14 Kt. Solid Gold
No. 352 $\frac{1}{2}$ V. with
Ring.....\$28.00



Plain, E. C.
Gold Filled
No. 052 $\frac{1}{2}$ V. with
Ring.....\$9.00
No. 083 $\frac{1}{2}$ V. with
Telescope Cap and
Ring.....\$41.00

14 Kt. Solid Gold
No. 352 $\frac{1}{2}$ V. with
Ring.....\$30.00
No. 352 $\frac{1}{2}$ V. with
Telescope Cap and
Ring.....\$46.00



Gothic, E. C.
Gold Filled
No. 052 $\frac{1}{2}$ V. with
Ring.....\$10.00
No. 083 $\frac{1}{2}$ V. with
Telescope Cap and
Ring.....\$12.00

14 Kt. Solid Gold
No. 352 $\frac{1}{2}$ V. with
Ring.....\$33.00
No. 352 $\frac{1}{2}$ V. with
Telescope Cap and
Ring.....\$43.00



Sheraton, E. C.
Gold Filled
No. 052 $\frac{1}{2}$ V. with
Ring.....\$10.00
No. 083 $\frac{1}{2}$ V. with
Telescope Cap and
Ring.....\$12.00

14 Kt. Solid Gold
No. 352 $\frac{1}{2}$ V. with
Ring.....\$33.00
No. 352 $\frac{1}{2}$ V. with
Telescope Cap and
Ring.....\$43.00



Etched, E. C.
Gold Filled
No. 082 $\frac{1}{2}$ V. with
Ring.....\$10.00
No. 083 $\frac{1}{2}$ V. with
Telescope Cap and
Ring.....\$12.00



Fancy Panel, U. C.
Gold Filled
No. 082 $\frac{1}{2}$ V. with
Ring.....\$10.00
No. 083 $\frac{1}{2}$ V. with
Telescope Cap and
Ring.....\$12.00

14 Kt. Solid Gold
No. 352 $\frac{1}{2}$ V. with
Ring.....\$33.00
No. 352 $\frac{1}{2}$ V. with
Telescope Cap and
Ring.....\$43.00

Above 14 Kt. Solid Gold pens also No. 052 $\frac{1}{2}$ V. w.r. Plain and Gothic Gold Filled are made in yellow and green gold

Any of the above pens may be had fitted with points as illustrated on page 59

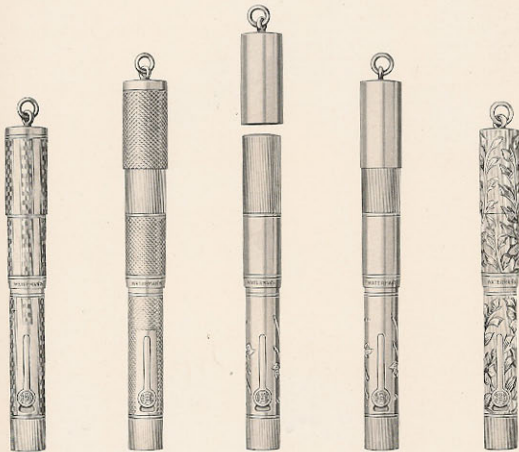
Waterman's Fountain Pen

TELESCOPE CAPS [Self-Filling Pens]

SHORT [V] LENGTH

STERLING SILVER MOUNTED

Illustrations Are Actual Size



Telescope Cap closed, with Ring on Geckle, E. C. Sterling Silver Self-Filling Pen

Telescope Cap half open, with Ring, on Barleycorn, E. C. Sterling Silver Self-Filling Pen

Telescope Cap open, with Ring on Scroll, E. C. Sterling Silver Self-Filling Pen

Telescope Cap half open, with Ring, on Scroll, E. C. Sterling Silver Self-Filling Pen

Telescope Cap closed, with Ring, on Hand Engraved Vine, E. C. Sterling Silver Self-Filling Pen

Telescope Caps offer an added convenience when pens are carried in the pocket, on a chain. The Telescope Cap fits firmly and securely on the cap of the pen yet permitting the pen to be quickly and easily detached for use. See pages 32, 33, 34, 41, 42, 49, 50.

Can also be supplied in 14 kt. Solid Yellow or Green Gold except Scroll also in Gold Filled except Barleycorn and Hand Engraved Vine

Any of the above pens may be had fitted with points as illustrated on page 59

Waterman's Fountain Pen

The Safety Type

For Women and Others

THE SAFETY TYPE differs from all other types of fountain pens. When the top is properly placed on a Safety Pen it is impossible for any ink to leak from it, no matter what position the pen assumes.

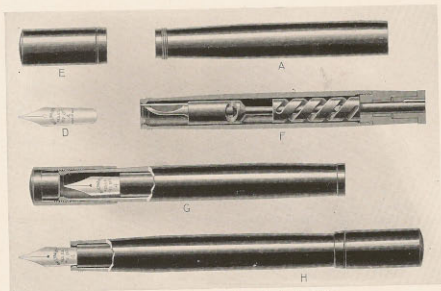
This fact has made the Safety Pen popular among travelers, those who desire to carry a pen in the lower vest pocket, and among women who wish to carry a pen in their trunks, traveling bags or hand bags.

The Safety Type is positive insurance against inadvertent ink stains.

As the reward in service and security from the Safety Type is great, there is a compensating reason for the proper handling of the Safety Type.

Every one who sells and every man and woman who uses a Safety Type should clearly understand how to use it.

The accompanying illustration gives a clear idea of how it is made.



A—Barrel. D—Gold Pen. E—Cap. F—Sectional View.
G—Pen Closed. H—Pen Open.

The pen automatically disappears into the barrel when the friction end of the holder is turned and acts as a cork which seals the ink in the barrel and when the cap is adjusted the pen is hermetically sealed.

This is a perfect device for the prevention of ink leakage.

Every Safety Pen buyer should be carefully and accurately informed as to how to fill and to use the Safety Pen.

Lacking this knowledge, the buyer of a Safety may have trouble.

The directions are simple.

To fill, hold the pen in an upright position and screw off the cap. You will notice that the pen is sunk in the barrel. With a dropper fill the barrel to the top. Keeping the open end up, place the cap on the lower end of barrel and turn to the right. This will cause the pen point to rise from the barrel and lock the pen section securely in place. Now wipe all ink from the end and the pen is ready to write.

To close the pen, hold it in an upright position; turn the cap to the left and the pen point will recede into the barrel; keep on turning until the cap comes off the barrel; then place the cap over the pen end and screw securely into place. It is very simple.

Women particularly will buy the Safety Type if their attention is called to its efficiency and simplicity.

To open, fill or close this pen, hold in an upright position

Waterman's Fountain Pen

SAFETY TYPE [Dropper Filling]

COMPARATIVE SIZES

Illustrations Are Actual Size



Chased
with
Gold Filled
Ring.
No. 42½ V.w.r.
\$5.25

Chased
with Clip
No. 42¾
\$3.25

Chased
with Clip
No. 42
\$3.25

Chased
with Clip
No. 44
\$4.25

Chased
with Clip
No. 45
\$5.25

Chased
with Clip
No. 46
\$6.25

Any of the above pens may be had fitted with points as illustrated on page 59

Waterman's Fountain Pen

SAFETY TYPE [Dropper Filling]

GOLD BAND MOUNTED

Illustrations Are Actual Size



Plain
with Gold Filled Clip
No. 4252 ... \$4.00
No. 42 ... 4.00
No. 44 ... 5.00
No. 45 ... 6.00
No. 46 ... 7.00
No. 48 ... 9.00



Checked
with Gold Filled Clip
No. 4235 ... \$4.00
No. 42 ... 4.00
No. 44 ... 5.00
No. 45 ... 6.00
No. 46 ... 7.00
No. 48 ... 9.00



Gold Filled
Sheraton Middle
Band with
Gold Filled Clip
No. 0742 ... \$5.00
No. 0742 ... 5.00
No. 0744 ... 6.00
No. 0745 ... 7.00
No. 0746 ... 8.00
No. 0748 ... 10.00



Gold Filled
Plain or Sheraton
Bands with
Gold Filled Clip
No. 0642 1/2 ... \$5.00
No. 0642 ... 5.00
No. 0644 ... 6.00
No. 0645 ... 7.00
No. 0646 ... 8.00
No. 0648 ... 10.00



Gold Filled
Plain Middle Band
with
Gold Filled Clip
No. 0742 1/2 ... \$5.00
No. 0742 ... 5.00
No. 0744 ... 6.00
No. 0745 ... 7.00
No. 0746 ... 8.00
No. 0748 ... 10.00

Any of the above pens may be had fitted with points as illustrated on page 59

Waterman's *ideal* Fountain Pen

SAFETY TYPE [Dropper Filling]

Illustrations Are Actual Size

GOLD AND SILVER MOUNTED



14 Kt. Solid Gold
Plain Narrow Middle
Band with 14 Kt.
Solid Gold Clip
No. 742 1/2 \$9.00
No. 743 9.00
No. 744 10.00
No. 745 12.00
No. 746 14.00

14 Kt. Solid Gold
Plain or Scroll Wide
Middle Band with 14
Kt. Solid Gold Clip
No. 742 1/2 \$12.00
No. 743 12.00
No. 744 14.00
No. 745 16.00
No. 746 17.00

*Filigree
Sterling Silver with
Sterling Silver Clip
No. 442 1/2 \$6.00
No. 442 6.00
No. 444 7.50
No. 445 9.00
No. 446 10.00

Plain
Covered to Friction
End, Gold Filled with
Gold Filled Clip
No. 0542 1/2 \$9.00
No. 0542 10.00
No. 0544 11.00
No. 0545 13.50
No. 0546 16.00

Etched
Covered to Friction
End, Gold Filled
with Gold Filled
Clip
No. 0542 1/2 \$11.00

Hard Engraved Vine
Covered to Friction
End, 14 Kt. Solid
Gold with 14 Kt.
Solid Gold Hard En-
graved Clip
No. 542 1/2 \$15.50
No. 542 37.50
No. 541 42.50

*Filigree
14 Kt. Solid Gold
with 14 Kt. Solid
Gold Clip
No. 542 1/2 \$25.50
No. 542 25.50
No. 544 27.00
No. 545 32.00
No. 546 47.00

Gold Filled with Gold
Filled Clip
No. 0542 1/2 \$11.00
No. 0542 11.00
No. 0544 13.50
No. 0545 16.00
No. 0546 19.00

14 Kt. Solid Gold
with 14 Kt. Solid
Gold Clip
No. 542 1/2 \$32.00
No. 542 34.00
No. 544 37.00
No. 545 42.00
No. 546 52.00

Any of the above pens may be had fitted with points as illustrated on page 59

Waterman's Fountain Pen

SAFETY TYPE [Dropper Filling]

SHORT [V] LENGTH

GOLD BAND MOUNTED

Illustrations Are Actual Size



No. 42 3/4 V.w.r. Plain (Closed)



Plain
with Gold
Filled Ring
No. 42 3/4 V.w.r.
\$3.25



Chased
with Gold
Filled Ring
No. 42 3/4 V.w.r.
\$3.25



Gold Filled
Plain Band at
Top of Cap with
Gold Filled
Ring
No. 0942 3/4 V.w.r.
\$4.40

14 Kt. Solid Gold
No. 941 1/2 V.w.r.
\$10.00



Gold Filled
Plain Middle Band
with Gold Filled
Ring
No. 0742 1/2 V.w.r.
\$4.25



Gold Filled
Sheraton Middle
Band with
Gold Filled Ring
No. 0742 3/4 V.w.r.
\$4.25

Any of the above pens may be had fitted with points as illustrated on page 59

Waterman's Fountain Pen

SAFETY TYPE [Dropper Filling]

SHORT [V] LENGTH

GOLD BANDED AND GOLD MOUNTED

Illustrations Are Actual Size



No. 0542 $\frac{1}{2}$ V.w.r. Sheraton Full Covered Gold Filled (Closed)



14 Kt. Solid Gold
Plain Narrow Middle
Band with 14 Kt.
Solid Gold Ring
No. 742 $\frac{1}{2}$ V.w.r.
\$8.00



14 Kt. Solid Gold
Plain Wide Middle
Band with 14 Kt.
Solid Gold Ring
No. 747 $\frac{1}{2}$ V.w.r.\$11.00



14 Kt. Solid Gold
Semi Wide Middle
Band with 14 Kt.
Solid Gold Ring
No. 742 $\frac{1}{2}$ V.w.r.\$11.00



Etched
Gold Filled
No. 0542 $\frac{1}{2}$ V. with
Ring.....\$9.50
No. 0542 $\frac{1}{2}$ V. with
Telescope Cap and
Ring.....\$12.00



Plain
Full Covered
Gold Filled
No. 094 $\frac{1}{2}$ V. with
Ring.....\$14.50
No. 0542 $\frac{1}{2}$ V. with
Telescope Cap and
Ring.....\$17.00



Sheraton
Full Covered
Gold Filled
No. 0542 $\frac{1}{2}$ V. with
Ring.....\$13.50
No. 0542 $\frac{1}{2}$ V. with
Telescope Cap and
Ring.....\$18.00

Above 14 Kt. Solid Gold Full Covered Pens are made
in yellow and green gold

Any of the above pens may be had fitted with points
as illustrated on page 59

14 Kt. Solid Gold
No. 542 $\frac{1}{2}$ V. with
Ring.....\$40.00
No. 542 $\frac{1}{2}$ V. with
Telescope Cap and
Ring.....\$50.00
Sterling Silver
No. 442 $\frac{1}{2}$ V. with
Ring.....\$7.50
No. 442 $\frac{1}{2}$ V. with
Telescope Cap and
Ring.....\$9.00

14 Kt. Solid Gold
No. 542 $\frac{1}{2}$ V. with
Ring.....\$43.00
No. 542 $\frac{1}{2}$ V. with
Telescope Cap and
Ring.....\$53.00

Waterman's Fountain Pen

SAFETY TYPE [Dropper Filling]

SHORT [V] LENGTH

SILVER AND GOLD MOUNTED

Illustrations Are Actual Size



No. 442½V. w. r. Hand Engraved Vine (Closed)



Filigree
Sterling Silver
No. 442½V. with
Ring.....\$6.00

Gold Filled
No. 0842½V. with
Ring.....\$10.50

14 Kt. Solid Gold
No. 542½V. with
Ring.....\$22.00



Hand Engraved Vine
Sterling Silver
No. 442½V. with
Ring.....\$8.50
No. 442½V. with
Telescope Cap and
Ring.....\$10.00

14 Kt. Solid Gold
No. 542½V. with
Ring.....\$30.00
No. 542½V. with
Telescope Cap and
Ring.....\$38.00



Plain
Sterling Silver
No. 442½V. with
Ring.....\$5.50
No. 442½V. with
Telescope Cap and
Ring.....\$7.50

Gold Filled
No. 0542½V. with
Ring.....\$7.50
No. 0542½V. with
Telescope Cap and
Ring.....\$10.00

14 Kt. Solid Gold
No. 542½V. with
Ring.....\$27.00
No. 542½V. with
Telescope Cap and
Ring.....\$35.00



Hand Engraved Vine
Full Covered
Sterling Silver
No. 442½V. with
Ring.....\$11.50
No. 442½V. with
Telescope Cap and
Ring.....\$14.00

14 Kt. Solid Gold
No. 542½V. with
Ring.....\$43.00
No. 542½V. with
Telescope Cap and
Ring.....\$51.00



Barleycorn
Sterling Silver
No. 442½V. with
Ring.....\$6.50
No. 442½V. with
Telescope Cap and
Ring.....\$8.50

14 Kt. Solid Gold
No. 542½V. with
Ring.....\$29.00



Scroll
Full Covered
Sterling Silver
No. 442½V. with
Ring.....\$8.50
No. 442½V. with
Telescope Cap and
Ring.....\$10.00

Any of the above pens may be had fitted with points as illustrated on page 59

The Pocket Type

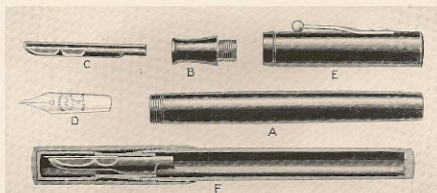


ON THE pages immediately following are illustrations of what is universally known as Waterman's Pocket Type, which differs from the Regular Type, the Self-filling Type and the Safety Type.

The Pocket Type differs from the Regular Type in two minor details. The point section is made with a flange instead of plain and with a screw thread on the barrel which engages a screw thread in the cap, thus making it impossible for the cap to come off until screwed off.

Because this type was designed particularly for pocket use, it should always be sold with the patented Waterman's Clip.

Like the Regular Type, the Pocket Type must be filled with a dropper and the same filling instructions apply.



A—Barrel. B—Point Section. C—Spoon Feed. D—Gold Pen. E—Cap with clip attached. F—Sectional View.

To fill pen remove cap, unscrew point section, fill barrel (using dropper) with Waterman's Ink, readjust point section by screwing tightly into barrel; wipe thoroughly pen and joint and the pen is ready for use.

The accompanying cut shows the construction of the Pocket Type, differing from the Regular Type only in the shape of the point section and the threaded barrel and cap.

Waterman's Fountain Pen

POCKET TYPE [Dropper Filling]

COMPARATIVE SIZES

Illustrations Are Actual Size



Chased
with Gold
Filled Ring
No. 72½ V.
\$2.75

Chased
with Gold
Filled Ring
No. 72V.
\$2.75

Chased
with Gold
Filled Ring
No. 74V.
\$4.25

Chased
with Clip
No. 73½
\$3.75

Chased
with Clip
No. 72
\$2.75

Chased
with Clip
No. 74
\$4.25

Chased
with Clip
No. 75
\$5.25

Chased
with Clip
No. 76
\$6.25
No. 78
\$8.25

Any of the above pens may be had fitted with points as illustrated on page 59

Waterman's Fountain Pen

POCKET TYPE [Dropper Filling]

GOLD BAND MOUNTED

Illustrations Are Actual Size



Plain with Clip	
No. 72	\$2.75
No. 73	2.75
No. 74	4.25
No. 75	3.25
No. 76	6.25
No. 78	8.25

Chased with Clip	
No. 72	\$2.75
No. 73	2.75
No. 74	4.25
No. 75	5.25
No. 76	6.25
No. 78	8.25

Gold Filled Plain Middle Band with Gold Filled Clip	
No. 0772	\$4.50
No. 0772	4.50
No. 0774	6.00
No. 0775	7.00
No. 0776	8.00

Gold Filled Sheraton Middle Band with Gold Filled Clip	
No. 0772	\$4.50
No. 0772	4.50
No. 0774	6.00
No. 0775	7.00
No. 0776	8.00

Gold Filled Sheraton or Plain Bands with Gold Filled Clip	
No. 0672	\$4.50
No. 0672	4.50
No. 0674	6.00
No. 0675	7.00
No. 0676	8.00

Any of the above pens may be had fitted with points as illustrated on page 59

Waterman's Fountain Pen

POCKET TYPE [Dropper Filling]

GOLD BANDED AND GOLD MOUNTED

Illustrations Are Actual Size



14 Kt. Solid Gold
Plain Narrow Middle
Band with 14 Kt. Solid
Gold Clip
No. 772½ \$8.00
No. 772 10.00
No. 774 11.00



14 Kt. Solid Gold
Plain Wide Middle
Band with 14 Kt. Solid
Gold Clip
No. 772½ \$10.00
No. 772 12.00
No. 774 14.00
No. 775 16.00
No. 776 17.00



14 Kt. Solid Gold
Scroll Wide Middle
Band with 14 Kt. Solid
Gold Clip
No. 772½ \$10.00
No. 772 12.00
No. 774 14.00
No. 775 16.00
No. 776 17.00



Gold Filled Plain
Mounting on Barrel
with Gold Filled Clip
No. 0372½ \$6.00
No. 0373 6.00
No. 0374 8.00



Gold Filled with Gold
Filled Clip
No. 0572½ \$9.50
No. 0573 9.50
No. 0574 11.00
No. 0575 13.50
No. 0576 16.00

14 Kt. Solid Gold with
14 Kt. Solid Gold Clip
No. 572½ \$27.00
No. 574 36.00

Any of the above pens may be had fitted with points as illustrated on page 59

Waterman's Ideal Fountain Pen

POCKET TYPE [Dropper Filling]

Illustrations Are Actual Size

SILVER AND GOLD MOUNTED



Gothic
Sterling Silver with
Sterling Silver Clip
No. 472 1/2.....\$5.50
No. 472.....5.50
No. 474.....7.50
No. 475.....9.00
No. 476.....10.00

Gold Filled
with Gold Filled Clip
No. 057 1/2.....\$11.00
No. 057.....11.00
No. 057A.....13.50
No. 057B.....16.00
No. 057C.....19.00

Sheraton
Sterling Silver with
Sterling Silver Clip
No. 472 1/2.....\$6.50

Gold Filled
with Gold Filled Clip
No. 057 1/2.....\$11.00

Pilgrimage
Sterling Silver with Sterling Silver Clip
No. 472 1/2.....\$5.50 No. 475.....\$9.00
473.....5.50 476.....10.00
474.....7.50

Gold Filled
with Gold Filled Clip
No. 057 1/2.....\$11.00 No. 057B.....\$16.00
057C.....14.00 057D.....19.00
057E.....13.50
14 Kt. Solid Gold with 14 Kt.
Solid Gold Clip
No. 572 1/2.....\$25.00 No. 574.....\$34.00

Hand Engraved Vine
Sterling Silver with
Hand Engraved Ster-
ling Silver Clip
No. 472 1/2.....\$9.00

Panorama
Sterling Silver with
Sterling Silver Clip
No. 472 1/2.....\$5.50
No. 473.....6.50
No. 474.....8.50

Gold Filled
with Gold Filled Clip
No. 057 1/2.....\$11.00
No. 057A.....11.00
No. 057B.....13.50

Any of the above pens may be had fitted with points as illustrated on page 59

Waterman's Ideal Fountain Pen

POCKET TYPE [Dropper Filling]

SHORT [V] LENGTH

GOLD BAND MOUNTED

Illustrations Are Actual Size



No. 72V, w. r. Plain (Closed)



Plain
with Gold Filled Ring
No. 72½ V. w. r. \$2.75
No. 72V, w. r. 2.75
No. 74V, w. r. 3.25

Chased
with Gold Filled Ring
No. 72½ V. w. r. \$2.75
No. 72V, w. r. 2.75
No. 74V, w. r. 3.25

Gold Filled
Sheraton or Plain
Band on Cap with
Gold Filled Ring
No. 0872½ V. w. r. \$3.75
No. 0872V, w. r. 3.75
No. 0874V, w. r. 3.25

Gold Filled
Plain or Sheraton
Middle Band with
Gold Filled Ring
No. 0772½ V. w. r. \$3.75

14 Kt. Solid Gold
Plain Band on Cap
with 14 Kt. Solid
Gold Ring
No. 872½ V. w. r. \$8.00

Gold Filled
Plain Band at Top of
Cap with Gold Filled
Ring
No. 4972½ V. w. r. \$4.00

Any of the above pens may be had fitted with points as illustrated on page 59

Waterman's Fountain Pen

POCKET TYPE [Dropper Filling]

SHORT [V] LENGTH

SILVER AND GOLD MOUNTED

Illustrations Are Actual Size



No. 472 $\frac{1}{2}$ V.w.r. Hand Engraved Vine, E.C. Sterling Silver (Closed)



Plain, E. C.
Sterling Silver
No. 472 $\frac{1}{2}$ V. with
Ring.....\$6.50
No. 472 $\frac{1}{2}$ V. with
Telescope Cap and
Ring.....\$8.00

Gold Filled
No. 0572 $\frac{1}{2}$ V. with
Ring.....\$9.00
No. 0572 $\frac{1}{2}$ V. with
Telescope Cap and
Ring.....\$11.00

14 Kt. Solid Gold
No. 572 $\frac{1}{2}$ V. with
Ring.....\$28.00
No. 572 $\frac{1}{2}$ V. with
Telescope Cap and
Ring.....\$40.00



Fillmore, E. C.
Sterling Silver
No. 472 $\frac{1}{2}$ V. with
Ring.....\$6.00

Gold Filled
No. 0572 $\frac{1}{2}$ V. with
Ring.....\$10.00

14 Kt. Solid Gold
No. 572 $\frac{1}{2}$ V. with
Ring.....\$16.00



Sheraton, E. C.
Sterling Silver
No. 472 $\frac{1}{2}$ V. with
Ring.....\$7.00
No. 472 $\frac{1}{2}$ V. with
Telescope Cap and
Ring.....\$9.00

Gold Filled
No. 0572 $\frac{1}{2}$ V. with
Ring.....\$10.00
No. 0572 $\frac{1}{2}$ V. with
Telescope Cap and
Ring.....\$12.00



Stroll, E. C.
Sterling Silver
No. 472 $\frac{1}{2}$ V. with
Ring.....\$7.00
No. 472 $\frac{1}{2}$ V. with
Telescope Cap and
Ring.....\$9.00

Gold Filled
No. 0572 $\frac{1}{2}$ V. with
Ring.....\$10.00
No. 0572 $\frac{1}{2}$ V. with
Telescope Cap and
Ring.....\$12.00



Hand Engraved
Vine, E. C.
Sterling Silver
No. 472 $\frac{1}{2}$ V. with
Ring.....\$7.50
No. 472 $\frac{1}{2}$ V. with
Telescope Cap and
Ring.....\$9.00

Above 14 Kt. Solid Gold Pens also No. 0572 $\frac{1}{2}$ V. w.r. Plain,
E. C. Gold Filled are made in yellow and green gold

Any of the above pens may be had fitted with points as illustrated on page 59

Waterman's Ideal Fountain Pen

POCKET TYPE [Dropper Filling]

SHORT [V] LENGTH

GOLD AND SILVER MOUNTED

Illustrations Are Actual Size



No. 0572½V. w. r. Sheraton, E. C. Gold Filled (Closed)



Fillmore, E. C.
Gold Filled
No. 0572½V. with
Ring.....\$10.00

Sterling Silver
No. 472½V. with
Ring.....\$6.00



Pansy Parcel, E. C.
Gold Filled
No. 0572½V. with
Ring.....\$10.00
No. 0572½V. with
Telescope Cap and
Ring.....\$17.00



Sheraton, E. C.
Gold Filled
No. 0572½V. with
Ring.....\$10.00
No. 0572½V. with
Telescope Cap and
Ring.....\$12.00



Gothic, E. C.
Gold Filled
No. 0572½V. with
Ring.....\$10.00
No. 0572½V. with
Telescope Cap and
Ring.....\$12.00



Etched, E. C.
Gold Filled
No. 0572½V. with
Ring.....\$10.00
No. 0572½V. with
Telescope Cap and
Ring.....\$12.00

Sterling Silver
No. 472½V. with
Ring.....\$7.00
No. 472½V. with
Telescope Cap and
Ring.....\$9.00

Sterling Silver
No. 472½V. with
Ring.....\$7.00
No. 472½V. with
Telescope Cap and
Ring.....\$9.00

Sterling Silver
No. 472½V. with
Ring.....\$7.00
No. 472½V. with
Telescope Cap and
Ring.....\$9.00

Any of the above pens may be had fitted with points as illustrated on page 59